

DR25RBH-WH/BK/SN

2.5 inch 5CCT LED Baffle Night Halo Recessed downlight(Air tight)

| DR | SIZE | SHAPE | FEATURE | COLOR |
|----|----------|-------------|---------------------|----------|
| | 20 35 40 | RB : Round | | WH BK SN |
| | 40 | RB : Round | D Dim to Warm | WH BK SN |
| | 35 | SB : Square | - Turned F Fixed | WH BK SN |
| | 25 | RB : Round | H Night Halo | WH BK SN |

20 : 2"
35 : 3.5"
40 : 4"

WH : White
BK : Black
SN : Silver

| Job Information | |
|-----------------|------|
| Project Name | Type |
| Location | |
| Quantity | Date |
| Contact/Name | |
| Notes | |

Body

- Durable airtight aluminum
- White polycarbonate diffuser lens for low glare

LED Characteristics

- 9-Watt(COB) LED Module
- 1.5-Watt(SMD) Night Halo
- Minimal heat emission
- Up to 650(COB)/50(SMD) Lumens
- Superior LED Performance and lifespan
- Excellent Color rendering with Spotlight

Dimming

- 10%-100% dimming capability
- Compatible with industry TRIAC/ELV dimmers (contact factory for compatible dimmers list)

Environment

- Suitable for wet locations
- Suitable for insulated ceiling application
- Can be installed indoor and for outdoor applications

Mounting

- Included two springs loaded clips to attach to any ceiling material
- The slim profile allow to be mounted dock work

Description

- DR25RBH, a 9watt(COB) and 1.5watt(SMD) 2.5 inch All CCT slim profile round flat LED panel is a high-performance, easy to install downlight. It offers excellent light output, energy efficiency, and streamlined design. Suitable for wet location and use in soffits.

Beam Spread

- 25 degree beam spread

LED Driver

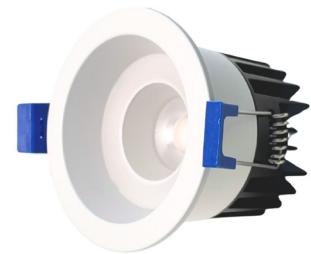
- Extruded junction box with integrated 210mA dimmable driver included
- Class II electronic LED driver with 100-125V AC input;
- includes an 12" cable from driver to fixture

Quick Connect Push-in Terminals

- Three "Quick Connect" Push-in terminals for fast and easy wiring

Operating Temperature

- -20°C - 40°C (-4°F - 104°F)

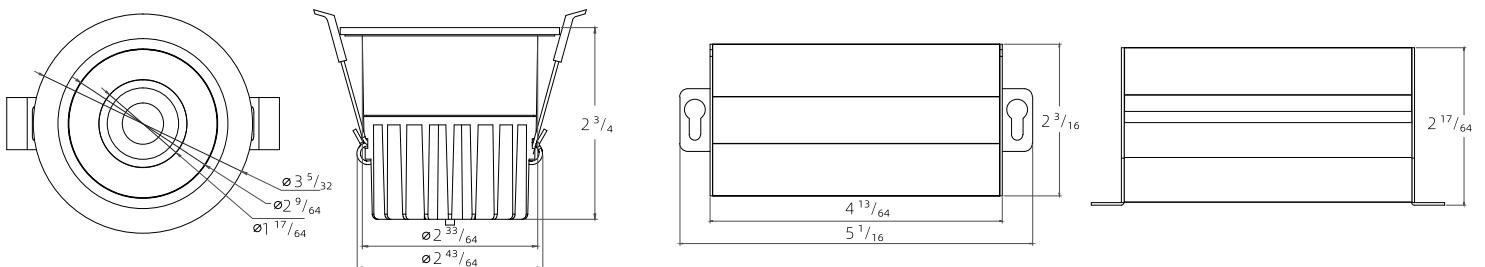


SPECIFICATION

| | | | |
|-------------------|-------------------------------|-----------------|--------------------------|
| Application | Ceiling Recessed Mount | Energy Star | YES |
| Approved Location | Wet | Input | 100-125V AC, 60Hz, 0.09A |
| Beam Angle | 25 | LM 79 | YES |
| CCT | 2700K/3000K/3500K/4000K/5000K | LM 80 | YES |
| Certification | cETLus | Lumens | Up to 650(COB)/50(SMD) |
| Class II | YES | Lumens per Watt | 72.22 |
| Color | White/Black/Brushed Nickel | Power Factor | >0.95 |
| CRI | 90+ | Projected Life | 5 Years |
| Dimming | YES | Wattage | 9(COB)/1.5(SMD) Watt |
| Dimming Tech | TRIAC/ELV | Cut-Size | 2 5/8" |

CCT LUMENS

| | |
|-------|-------|
| 2700K | 550LM |
| 3000K | 590LM |
| 3500K | 620LM |
| 4000K | 650LM |
| 5000K | 650LM |



2450 Morningside Ave #2,
Scarborough, ON M1X 0E2

E: sales@zotia.ca
W: www.dawnray.ca

T: (416) 297-5666