

# 30TL-L

## 3" 5CCT LED TIRMLESS POT LIGHT

### Job Information

|              |  |      |
|--------------|--|------|
| Project Name |  | Type |
| Location     |  |      |
| Quantity     |  | Date |
| Contact/Name |  |      |
| Notes        |  |      |

#### Body

- Durable Aluminium body
- White polycarbonate diffuser lens for low glare

#### LED Characteristics

- 12-Watt LED Module
- Minimal heat emission
- Up to 1100 Lumens
- Superior LED Performance and lifespan
- Excellent Color rendering with Spotlight

#### Dimming

- 10%-100% dimming capability
- Compatible with TRIAC/ELV dimmers

#### Environment

- Suitable for wet locations
- Suitable for insulated ceiling application
- Can be installed indoor and for outdoor applications

#### Mounting

- Webbed plate for mudding
- Four flat head screws

#### Description

- 30TL-L, a 12watt 3-inch 5CCT led tirmless pot light is a high-performance, easy to install downlight. It offers excellent light output, energy efficiency, and streamline design. Suitable for wet location and use under soffits.

#### Beam Spread

- 38 degree beam spread

#### LED Driver

- Extruded iron junction box with integrated 210mA dimmable driver included
- LVLE output LED driver with 100-125V AC input; included 12inch cable from the driver to fixture.

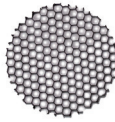
#### Quick Connect Push-in Terminals

- Three "Quick Connect" Push-in terminals for fast and easy wiring

#### Operating Temperature

- -20°C - 40°C (-4°F - 104°F)

#### Optional



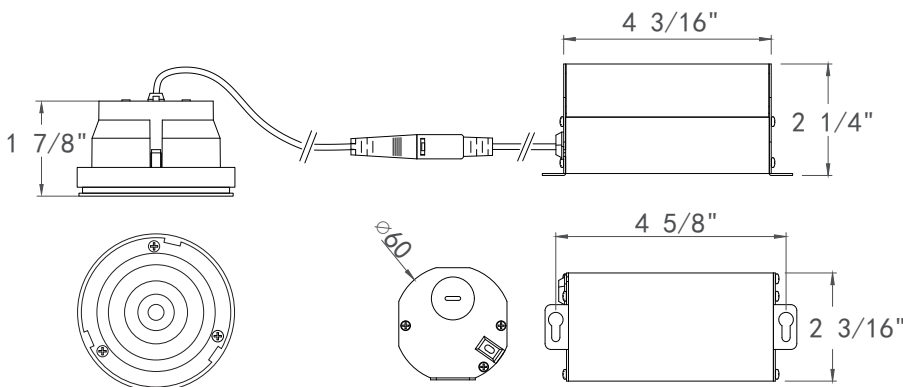
#### Honey comb louver (included in box)

- Anti glare (it may diminish lumen output by 10-25%)



### SPECIFICATION

|                   |                               |                 |                          |
|-------------------|-------------------------------|-----------------|--------------------------|
| Application       | Ceiling Recessed Mount        | Energy Star     | YES                      |
| Approved Location | Wet                           | Input           | 100-125V AC, 60Hz, 0.09A |
| Beam Angle        | 38                            | LM 79           | YES                      |
| CCT               | 2700K/3000K/3500K/4000K/5000K | LM 80           | YES                      |
| Certification     | cETLus                        | Lumens          | Up to 1100               |
| Class II          | YES                           | Lumens per Watt | 91.67                    |
| Color             | White                         | Power Factor    | >0.90                    |
| CRI               | 90+                           | Projected Life  | 5 Years                  |
| Dimming           | YES                           | Wattage         | 12 Watt                  |
| Dimming Tech      | TRIAC/ELV                     | Cut-Size        | 3 3/8"                   |



# 30TLR-R-WH/BK

## 3 Inch Trimless Round Cover Head

### Body

- Durable Iron

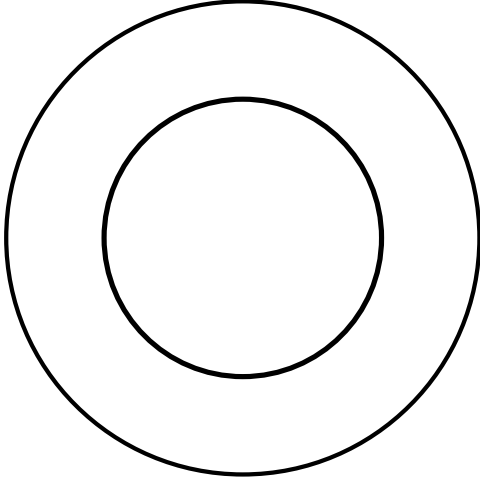
### Description

- Multi Mud-in Plate provide users more possibility to achieve their creativeness.

### Compatible Fixtures

- 30TL-L
- 30TL-G

| Job Information |  |      |
|-----------------|--|------|
| Project Name    |  | Type |
| Location        |  |      |
| Quantity        |  | Date |
| Contact/Name    |  |      |
| Notes           |  |      |



# 30TLR-S-WH/BK

## 3 Inch Trimless Square Cover Head

### Body

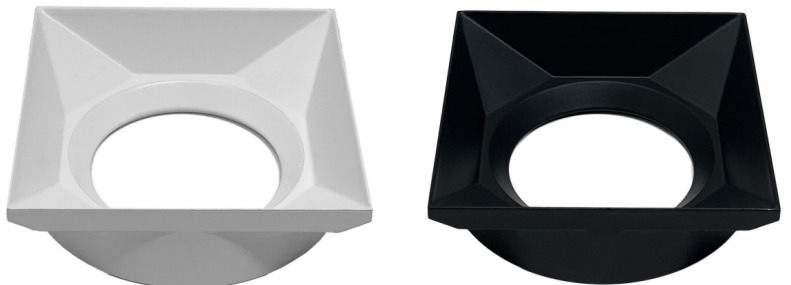
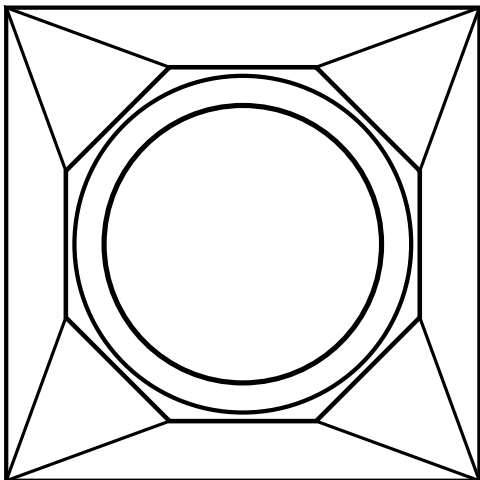
- Durable Iron

### Description

- Multi Mud-in Plate provide users more possibility to achieve their creativeness.

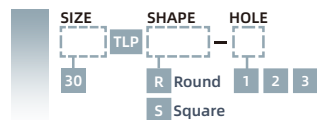
### Compatible Fixtures

- 30TL-L
- 30TL-G



# 30TLPR-1/2/3

## 3 Inch Trimless Mud-in Plate



### Body

• Durable Iron

### Description

• Multi Mud-in Plate provide users more possibility to achieve their creativeness.

### Compatible Fixtures

• 30TL-L  
• 30TL-G

| Job Information |  |      |
|-----------------|--|------|
| Project Name    |  | Type |
| Location        |  |      |
| Quantity        |  | Date |
| Contact/Name    |  |      |
| Notes           |  |      |

