

30TL-L-WH

3" 5CCT LED TIRMLESS POT LIGHT

| Job Information | | |
|-----------------|--|------|
| Project Name | | Type |
| Location | | |
| Quantity | | Date |
| Contact/Name | | |
| Notes | | |

Body

- Durable Aluminium body
- White polycarbonate diffuser lens for low glare

LED Characteristics

- 12-Watt LED Module
- Minimal heat emission
- Up to 1100 Lumens
- Superior LED Performance and lifespan
- Excellent Color rendering with Spotlight

Dimming

- 10%-100% dimming capability
- Compatible with TRIAC/ELV dimmers

Environment

- Suitable for wet locations
- Suitable for insulated ceiling application
- Can be installed indoor and for outdoor applications

Mounting

- Webbed plate for mudding
- Four flat head screws

Description

- 30TL-L, a 12watt 3-inch 5CCT led tirmless pot light is a high-performance, easy to install downlight. It offers excellent light output, energy efficiency, and streamline design. Suitable for wet location and use under soffits.

Beam Spread

- 38 degree beam spread

LED Driver

- Extruded iron junction box with integrated 210mA dimmable driver included
- LVLE output LED driver with 100-125V AC input; included 12inch cable from the driver to fixture.

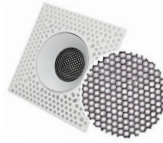
Quick Connect Push-in Terminals

- Three "Quick Connect" Push-in terminals for fast and easy wiring

Operating Temperature

- -20°C - 40°C (-4°F - 104°F)

Optional



- Honey comb louver (included in box)
- Anti glare (it may diminish lumen output by 10-25%)



SPECIFICATION

| | | | |
|-------------------|-------------------------------|-----------------|--------------------------|
| Application | Ceiling Recessed Mount | Energy Star | YES |
| Approved Location | Wet | Input | 100-125V AC, 60Hz, 0.09A |
| Beam Angle | 38 | LM 79 | YES |
| CCT | 2700K/3000K/3500K/4000K/5000K | LM 80 | YES |
| Certification | cETLus | Lumens | Up to 1100 |
| Class II | YES | Lumens per Watt | 69.17 |
| Color | White | Power Factor | >0.90 |
| CRI | 90+ | Projected Life | 3 Years |
| Dimming | YES | Wattage | 12 Watt |
| Dimming Tech | TRIAC/ELV | Cut-Size | 3 3/8" |

