

MP-02

4" Mounting Plate (With Lip)

Suit for 4" retrofit housings and 4" Slim Panels

| Job Information | | |
|-----------------|--|------|
| Project Name | | Type |
| Location | | |
| Quantity | | Date |
| Contact/Name | | |
| Notes | | |

Category

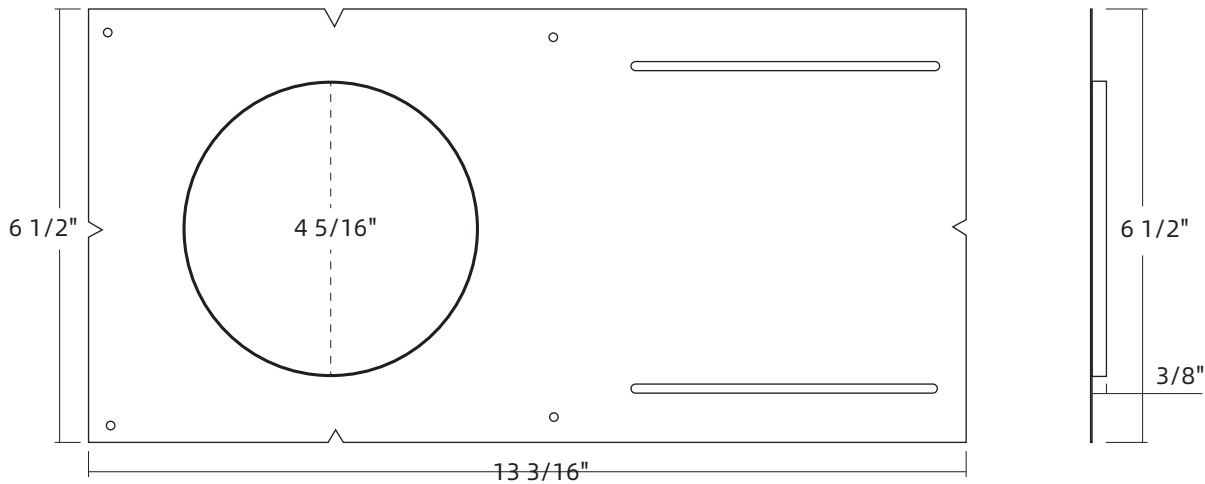
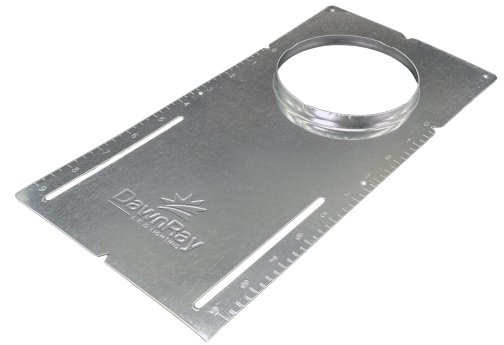
- Mounting Plate

Features

- With scales for calibration
- With Lip

Compatible Fixtures

- All DR40**(4inch) series



Zotia International Trade Ltd.
201 Rowntree Dairy Road
Woodbridge, ON, L4L 8B8

T: 905-669-1966
F: 905-851-5262

E: sales@zotia.ca
W: www.dawnray.ca

